

Stowe Landscape Gardens

The Restoration and Management of a Rural Arcadian Landscape



Delta International Summer School
Comacchio 2019

Who are the National Trust?



We're a charity founded in 1895 by three people who saw the importance of our nation's heritage and open spaces and wanted to preserve them for everyone to enjoy. Over 100 years later these values are still at the heart of everything we do.

We look after coastlines, forests, woods, fens, beaches, farmland, moorland, islands, archaeological remains, nature reserves, villages, historic houses, gardens, mills and pubs. We restore them, protect them and open them up to everyone.

Our purpose is to look after special places, for ever, for everyone - growing the nation's love of special places is how we express that, putting the relationship between people and places at the heart of what we do.

We are a charity and completely independent of Government. We rely for income on membership fees, donations and legacies, and revenue raised from our commercial operations.

Who are the National Trust?

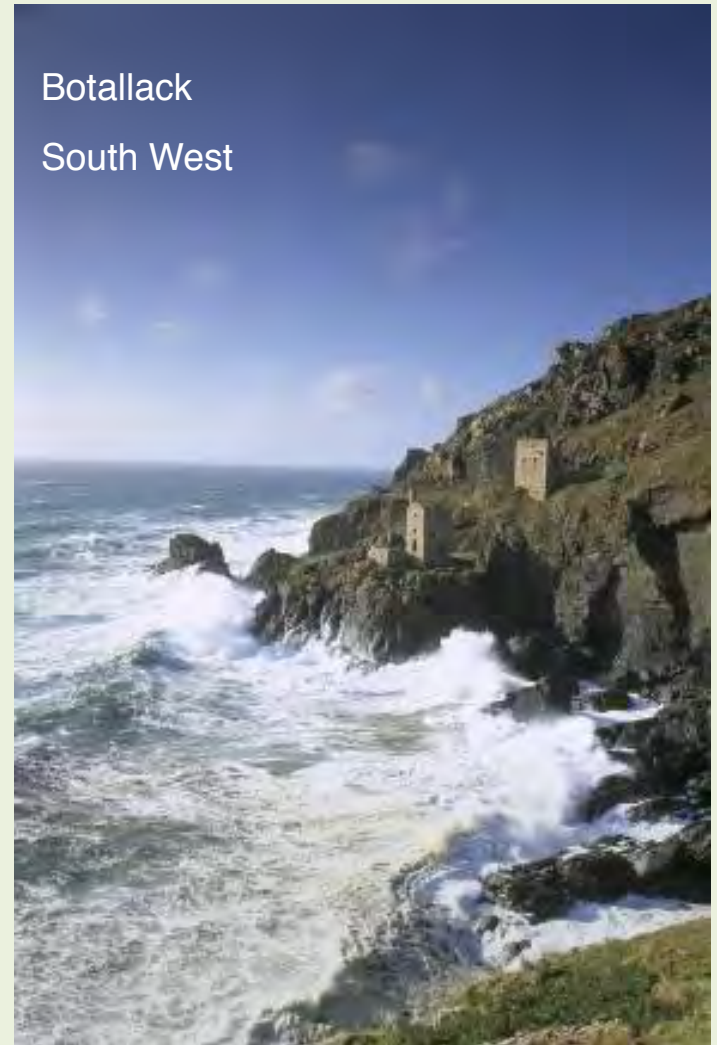
- Europe's largest conservation charity
- We are supported by 5.6 million members
- Our activities are enshrined in an act of parliament from 1907



National Trust Portfolio

The National Trust looks after
over 30,000 places, buildings and
structures
including:

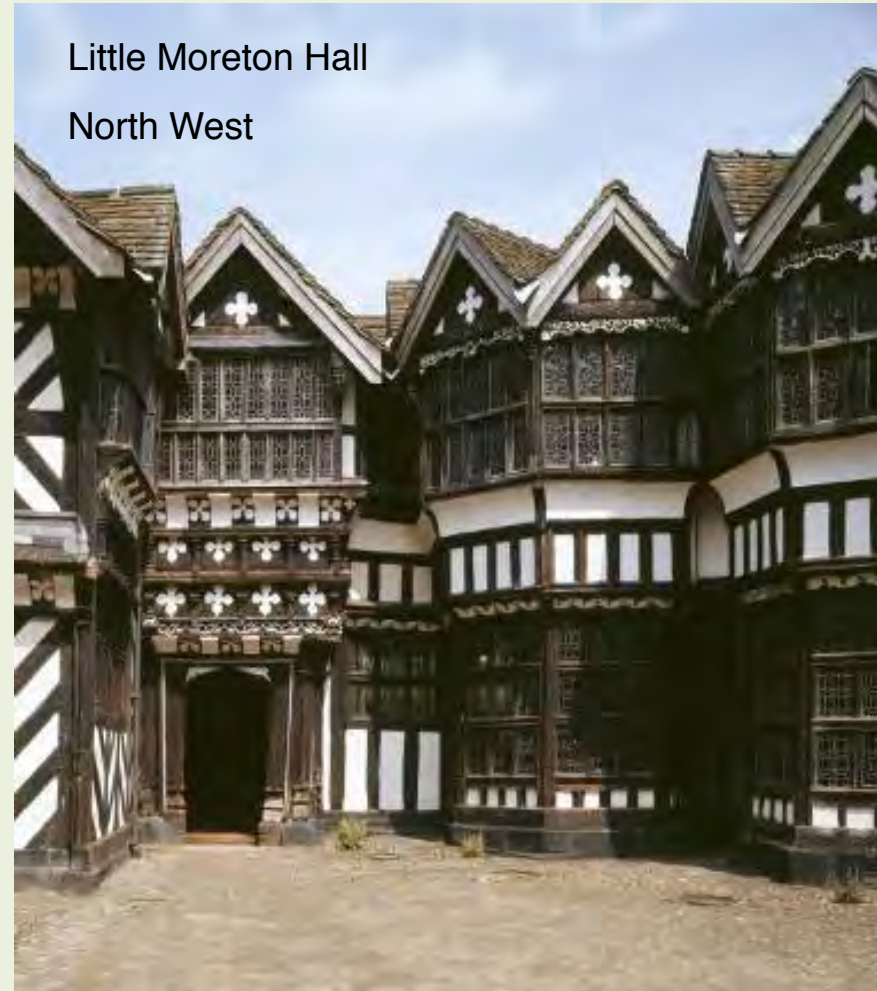
1150 kilometres of coastline



National Trust Portfolio

The National Trust looks after
over 30,000 places, buildings and
structures
including:

1150 kilometres of coastline
235 mansions



National Trust Portfolio

The National Trust looks after
over 30,000 places, buildings and structures
including:

- 1150 kilometres of coastline
- 232 mansions
- 12 lighthouses



National Trust Portfolio

The National Trust looks after
over 30,000 places, buildings and
structures
including:

- 1150 kilometres of coastline
- 232 mansions
- 12 lighthouses
- 28 castles



National Trust Portfolio

The National Trust looks after
over 30,000 places, buildings and structures
including:

1150 kilometres of coastline

232 mansions

12 lighthouses

28 castles

78 mills

Flatford Mill

East of England



National Trust Portfolio

The National Trust looks after over 30,000 places, buildings and structures including:

1150 kilometres of coastline

232 mansions

12 lighthouses

28 castles

78 mills

25 medieval barns

Great Coxwell Barn
London & South East



National Trust Portfolio

The National Trust looks after over 30,000 places, buildings and structures including:

1150 kilometres of coastline

232 mansions

12 lighthouses

28 castles

78 mills

25 medieval barns

61 pubs and inns



The Kings Head
London & South East

National Trust Portfolio

The National Trust looks after over 30,000 places, buildings and structures including:

1150 kilometres of coastline

232 mansions

12 lighthouses

28 castles

78 mills

25 medieval barns

61 pubs and inns

57 villages



Lacock Village

South West

National Trust Portfolio

The National Trust looks after
over 30,000 places, buildings and structures
including:

1150 kilometres of coastline

232 mansions

12 lighthouses

28 castles

78 mills

25 medieval barns

61 pubs and inns

57 villages

5000 cottages



National Trust Portfolio

The National Trust looks after over 30,000 places, buildings and structures including:

- 1150 kilometres of coastline
- 232 mansions
- 12 lighthouses
- 28 castles
- 78 mills
- 25 medieval barns
- 61 pubs and inns
- 57 villages
- 5000 cottages
- 700+ Farmsteads

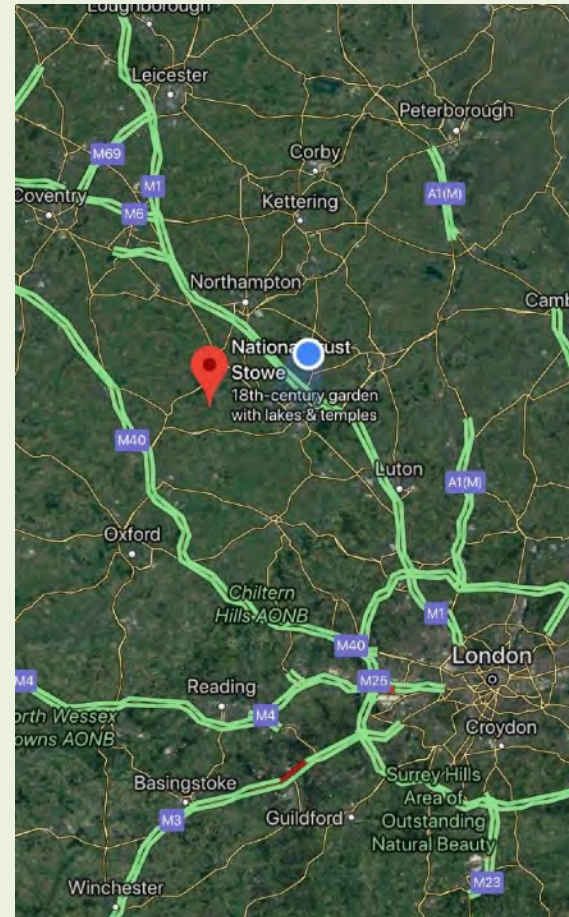


Wharfedale
Yorkshire & North East





Stowe Landscape Gardens





The scale and beauty of Stowe has attracted visitors for over 300 years. Full of hidden meaning, the gardens were created as an earthly paradise, and still cast their spell today.

Stowe Landscape Gardens

The most significant example of an English 18th Century Landscape Garden in the world and the birthplace of the English Landscape.

Gifted to the National Trust by Stowe School in 1989, the Trust embarked on an extensive conservation and restoration programme to return the landscape garden to its former glory.

Stowe Landscape Gardens

- 250 Acres of Garden
- 750 Acres of Parkland
- 10 Lakes & Water features
- 45 Temples & Monuments
- 26 Grade I Listed Monuments
- Grade I listed Garden & Park



The Timeline of Stowe

1697 – 1749 **Viscount Cobham**

1752 – 1779 **2nd Earl Temple**

1779 – 1813 **1st Marquess of Buckingham**

1813 – 1839 **1st Duke of Buckingham**

1839 – 1861 **2nd Duke of Buckingham**

1845 Queen Victoria's visit

1848 BANKRUPTCY and sale of contents

1861 – 1889 **3rd Duke of Buckingham**

1922 – 1990 **Stowe School**

1990 – present **NATIONAL TRUST**

From formality to freedom

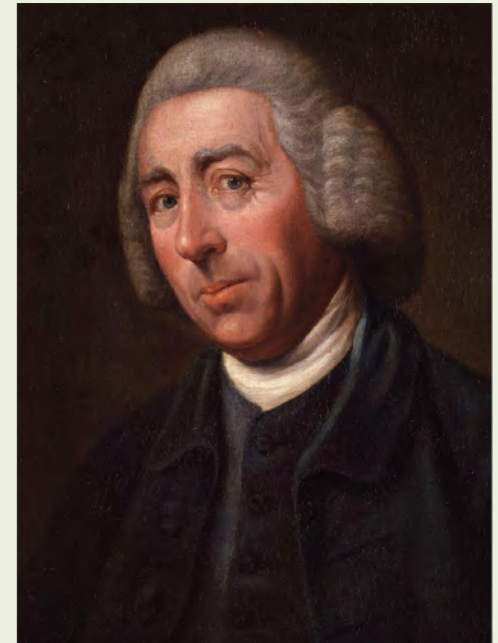
35 years of the 18th century's most influential gardeners



Charles Bridgeman
1714 -
1728



~ William Kent
Brown's
1730's



~ Capability
1741 -
1751

Most notable Architects & Artisans



Sir John Vanburgh



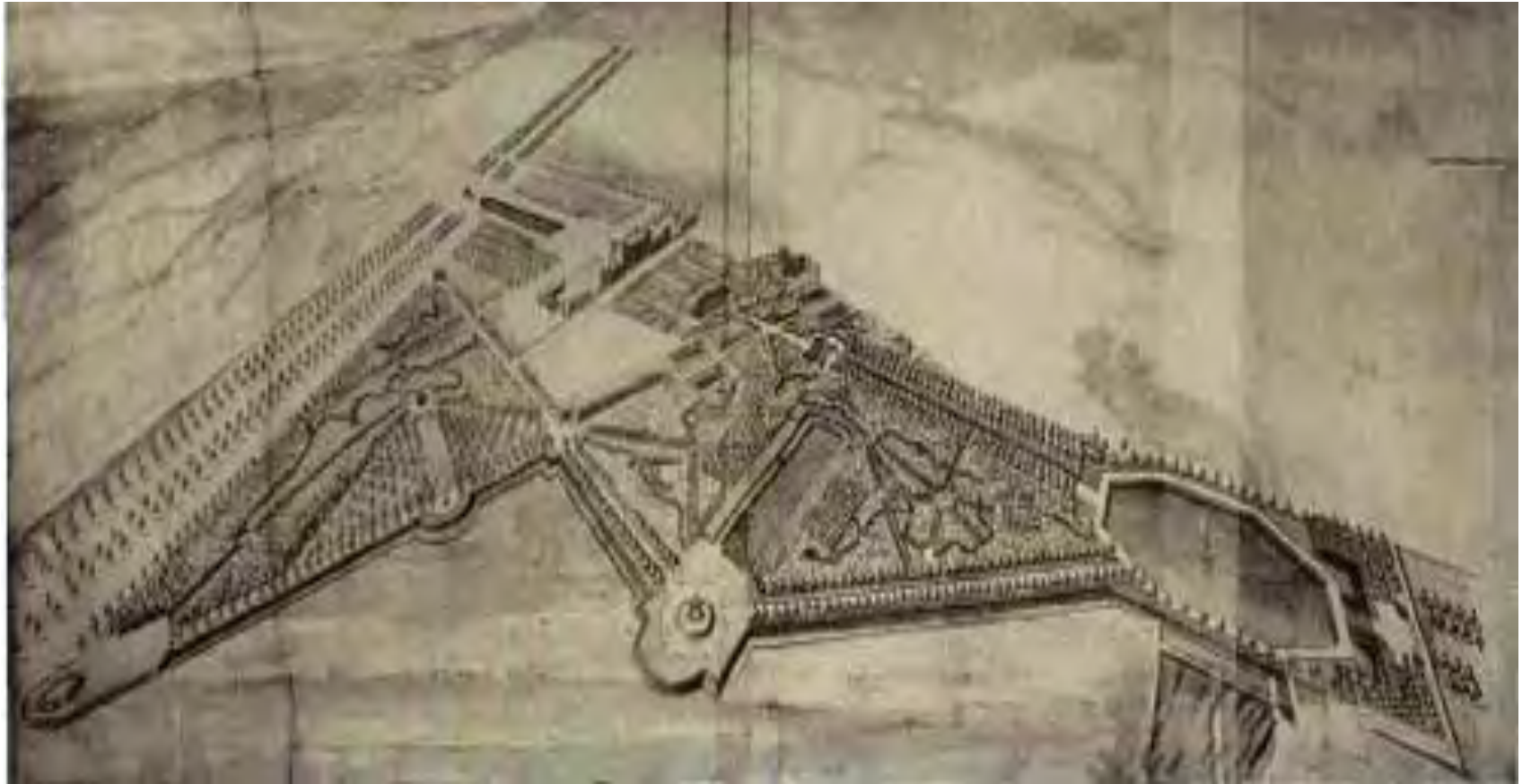
James Gibbs

Sir John Soane
Robert Adam
Giacomo Leoni
George-Francois Blondel
Giovanni Battista Bora
Francesco Sleter
Vincenzo Valdre

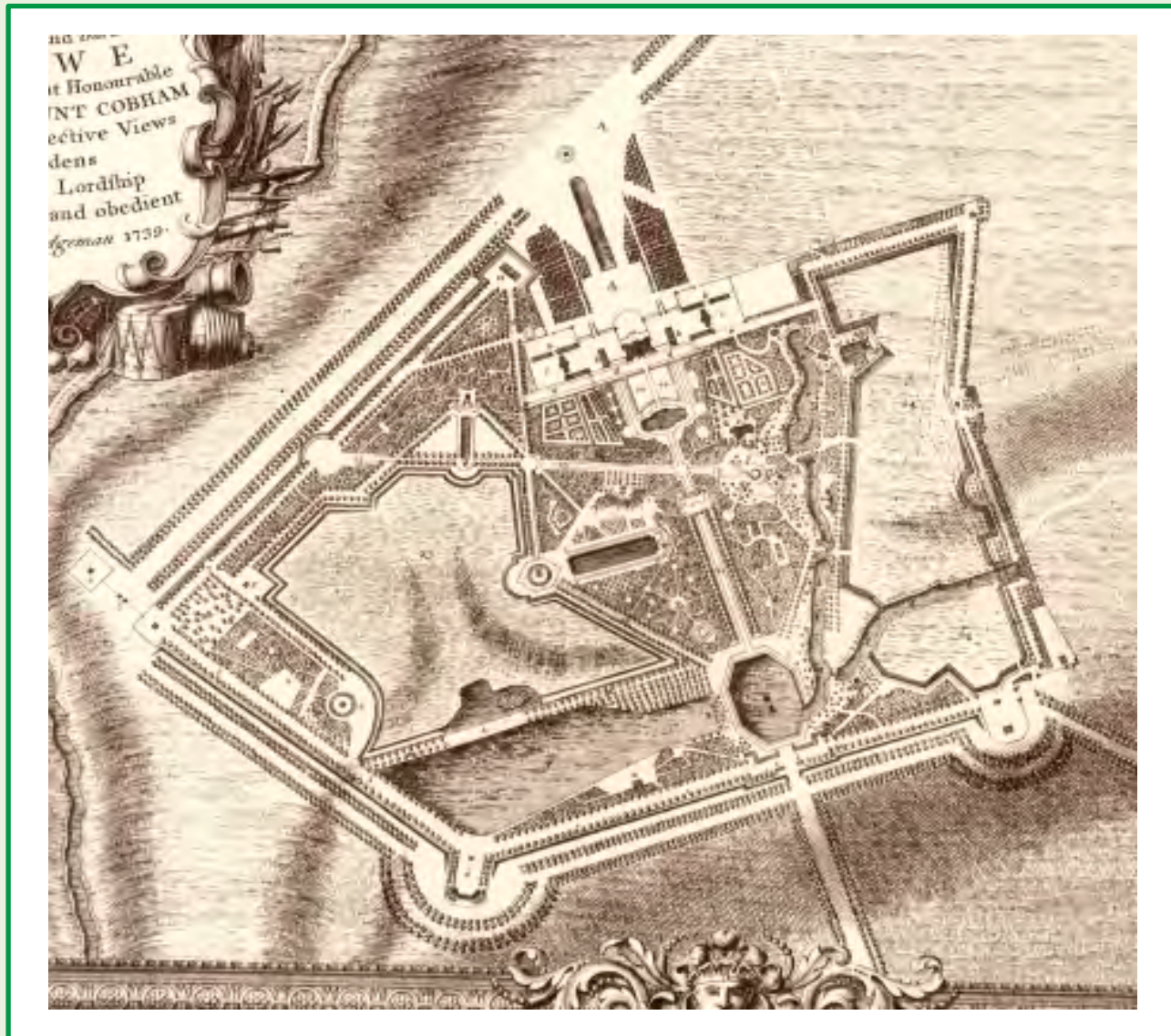
Sculptors

John Nost
Peter Scheemakers
John Michael Rysbrack

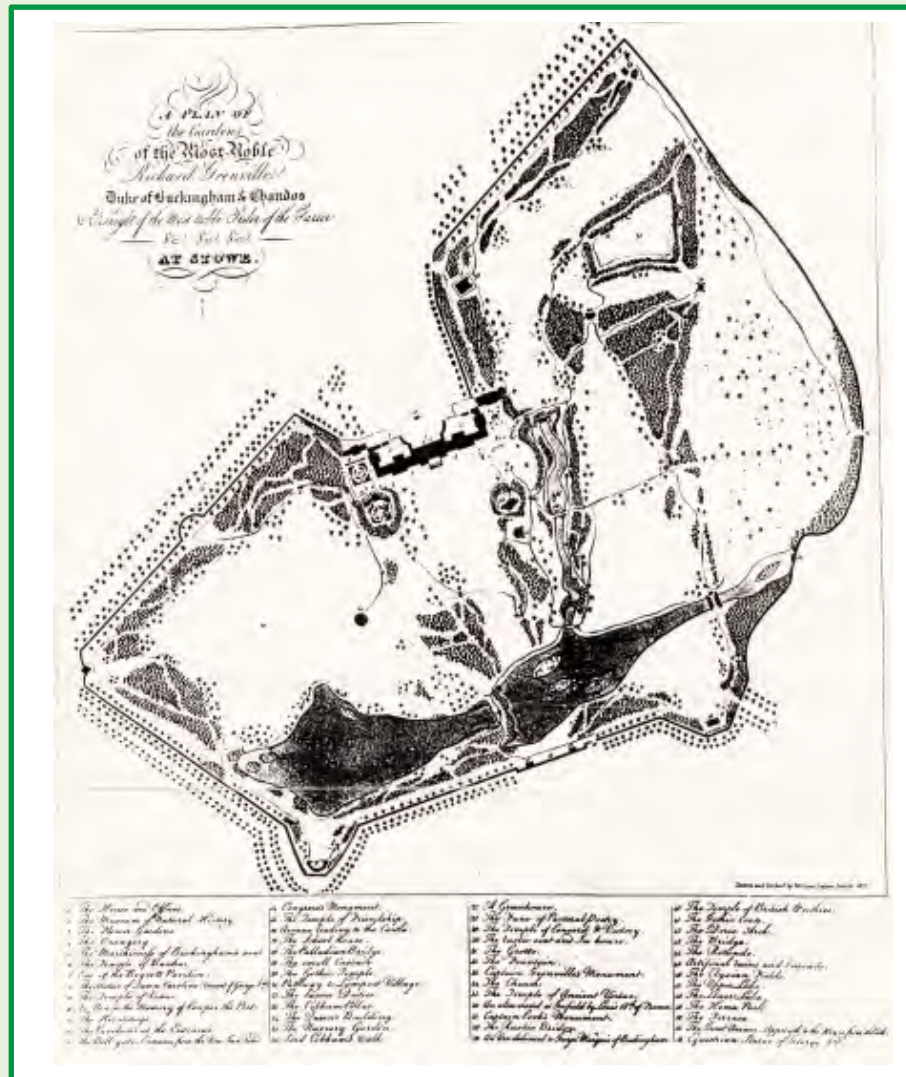
Charles Bridgeman



William Kent



Capability Brown



Restoring Stowe

Informing our approach - desktop

- Archival research
 - Huntington Library California USA
 - Buckinghamshire County archive
 - Stowe School archive
 - National Trust archive/collections
- Conservation Management Plans
- Statutory guidance & principles

Conservation Principles

Our core values generally respect the desire to ‘Look after’ what people cherish and value of our buildings and wider environment and have held true from our foundation in 1895 to the present day.

The following six principles currently guide and inform our approach to conservation;

- Significance
- Integration
- Change
- Access & engagement
- Skills & partnership
- Accountability

Not unlike the current guidance from Historic England & BS 7913 : 2013

Conservation Principles

The current National Trust definition of conservation is;
*'.....the **careful management of change**. It is about revealing and sharing the significance of places and ensuring that their special qualities are protected, enhanced, understood and enjoyed by present and future generations'*

Conservation Directorate Sept. 2003

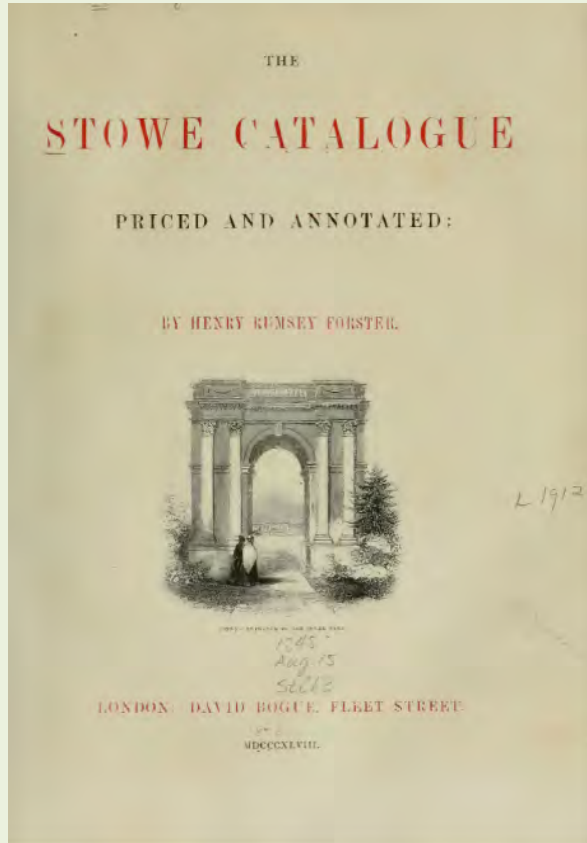
Compare the above to the 1907 Act that created the Trust in which the Trust's purpose was defined as *'...promoting the **permanent preservation** for the benefit of the nation of lands and tenements (including buildings) of beauty or historic interest and as regards lands for the preservation (so far as practicable) of their natural aspect features and animal and plant life'*

Section 4.1 National Trust Act 1907

Our Core Values

- Looking after what we've got
- Restoring a healthy, beautiful natural environment
- Experiences that move, teach and inspire
- Helping look after urban spaces
- Growing support

Restoring Stowe



NINETEEN DAYS' SALE AT STOWE
By direction of the Right Hon. The Baroness Kinloss, C.J.
The Rev. The Hon. L. C. P. T. Morgan-Grenville, Master of Kinloss, and the
Trustees of the will of the late Duke of Buckingham and Chandos, G.C.S.I.

THE DUCAL ESTATE OF STOWE
NEAR BUCKINGHAM.
The Historical Seat of the Dukes of Buckingham and Chandos
and for some years the residence of the late Comte de Paris.

MESSRS. JACKSON STOPS

WILL SELL BY AUCTION, AT STOWE HOUSE.

On Monday, July 4th, 1921, at 1 o'clock
**THE FREEHOLD OF THE HISTORIC
MANSION & ESTATE**

Extending to about 1,400 acres, including the World-famous Grounds, and
Temples, Surrounding Park Lands, and the Picturesque Village of Dadford.

The Estate will be first offered as a whole, and, if not then sold, in 67 lots, including
24 First Pasture Farms and Small Holdings, chiefly with vacant possession; Houses
and Freehold Ground Rents, at or near the Town of Buckingham.

On the eighteen days following (from July 5th to July 28th
excluding Saturdays, at 11 o'clock precisely each day) will be sold the

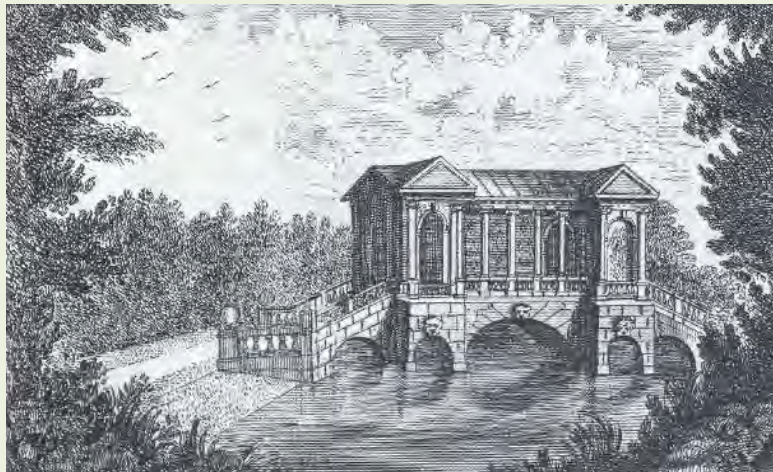
Contents of the Mansion

Including the Supremely Valuable Collection of

Heirloom Pictures, Tapestries and Historic Furniture,
by the World's Greatest Masters, Superb Statuary and Metal Work, important collection
of Rare China, Porcelain, an immense assortment of other Objets d'Art, the Contents
of the Magnificent Library, fine collection of Historic Letters and Manuscripts, the
Valuable Gold Plate, Carvings and Panellings by Grinling Gibbons.

FAMOUS CLASSIC TEMPLES
and other Buildings and Bridges luxuriously
built to designs by famous architects.

Restoring Stowe



Restoring Stowe



Engraved by F. Mitchell

A TYPICAL PIECE OF RUINS.

W. & A. G. & Co. Printers, London.

Restoring Stowe



Restoring Stowe



View through the Doric Arch

Plate 34

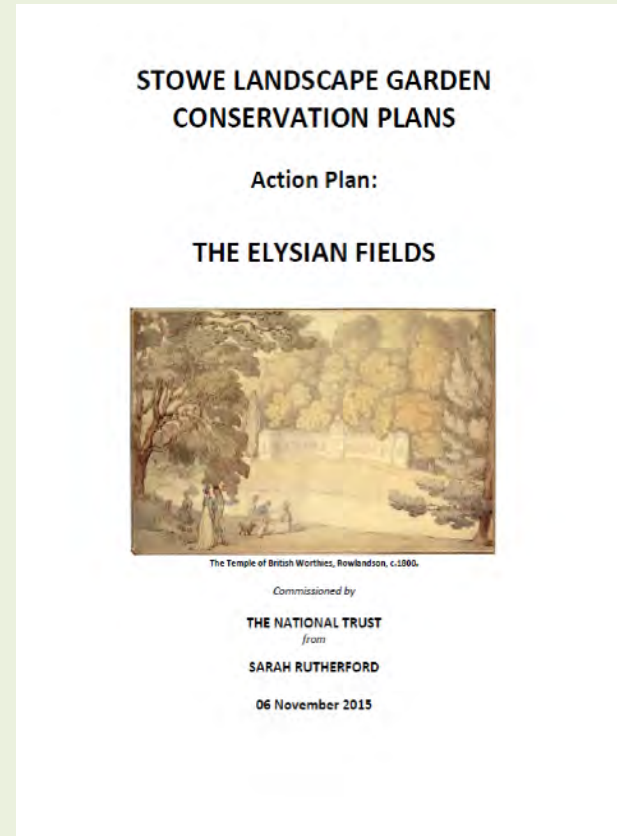
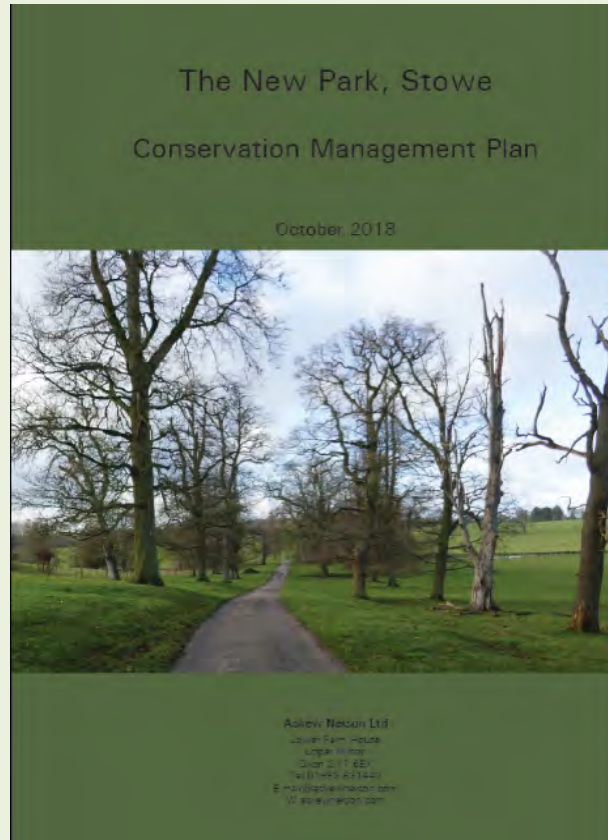


View through the Doric Arch *Cat. No. 79*

View through the Doric Arch



Restoring Stowe



Conservation Management Plans

Restoring Stowe

Informing our approach - Practically

- Archaeology
- Retrieving historic sale items
- Learning from previous projects at Stowe
- Assessment of other known sites

Restoring Stowe

A continual process of restoration for the National Trust from 1989



Restoring Stowe

Ornamental lakes regulated as reservoirs



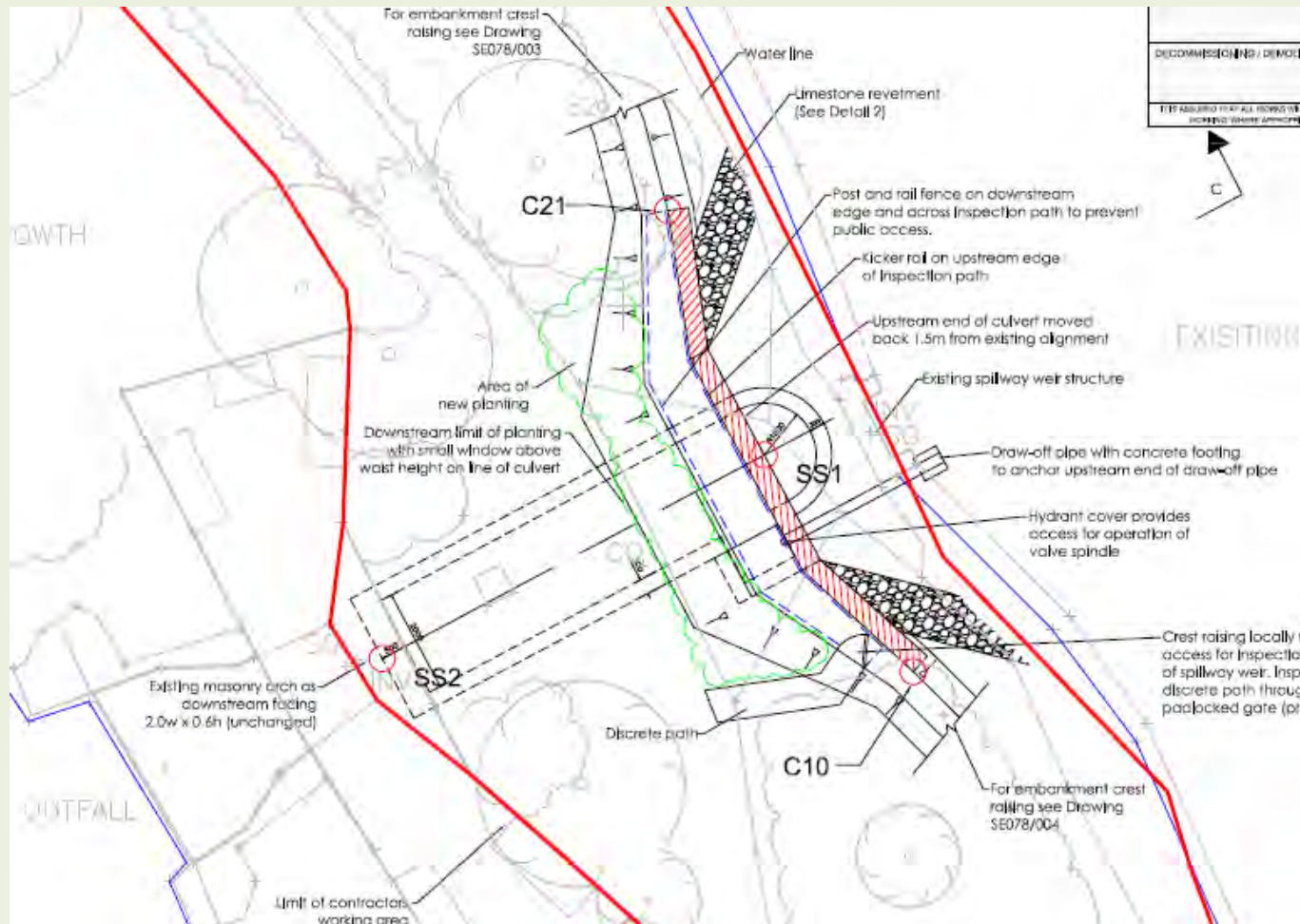
Restoring Stowe

Ornamental lakes regulated as reservoirs



Restoring Stowe

Ornamental lakes regulated as reservoirs



Restoring Stowe

Ornamental lakes regulated as reservoirs



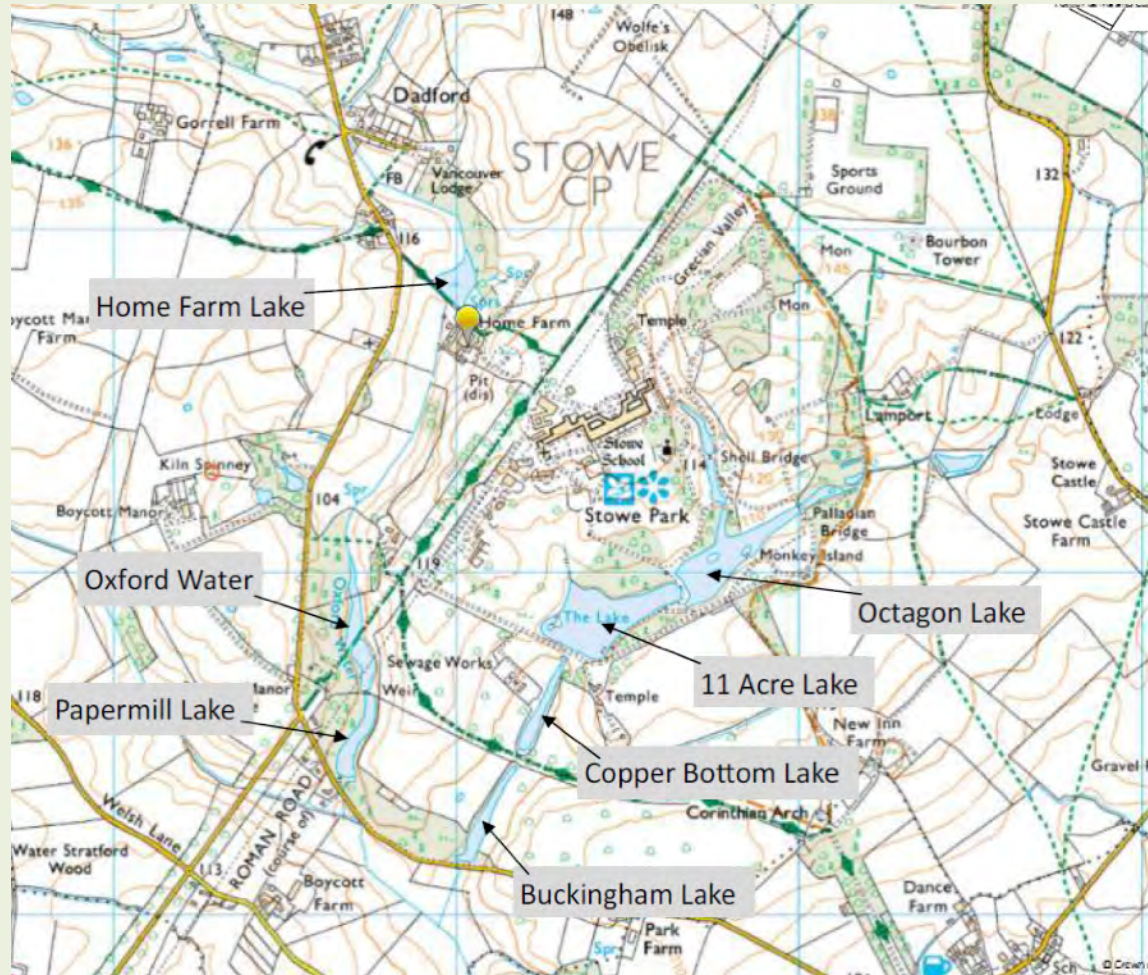
Restoring Stowe

Ornamental lakes regulated as reservoirs



Restoring Stowe

Case Study – Lake Restoration



Case Study 1 – Lake Restoration



Survey reports prepared identifying defects and areas requiring repair to the smaller lakes



Case Study 1 – Lake Restoration



Placing faggots made from coppiced Hazel around the lake margin to prevent soil erosion and help vegetation to establish



Case Study 1 – Lake Restoration



Case Study 1 – Lake Restoration



Case Study 1 – Lake Restoration



Case Study 1 – Lake Restoration



Case Study 1 – Lake Restoration



Case Study 2 – Boundary repairs



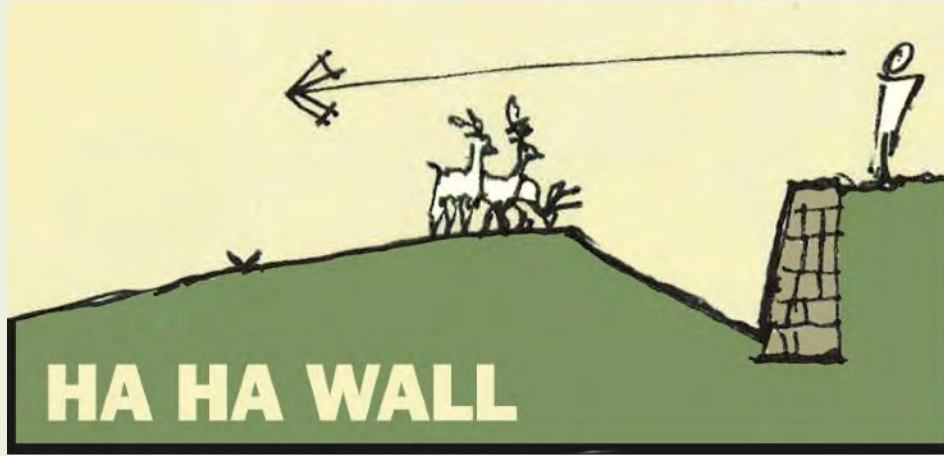
Case Study 2 – Boundary repairs



Case Study 2 – Boundary repairs



Case Study 2 – Boundary repairs



Case Study 2 – Boundary repairs



Case Study 2 – Boundary repairs



Case Study 2 – Boundary repairs



Case Study 2 – Boundary repairs



Case Study 2 – Boundary repairs



Case Study 2 – Boundary repairs



Case Study 2 – Boundary repairs



Case Study 2 – Boundary repairs



Case Study 2 – Boundary repairs



Case Study 3 – Temple of Friendship



Case Study 3 – Temple of Friendship

Render Conservation key:

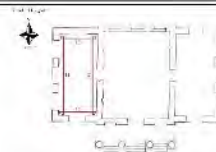
 Surface consolidation

 Edge Repair/Crack filling

 Cementitious render

 Missing cornice moulding

 Supporting brackets as required



1. Masonry	2. Plaster	3. Brick
4. Mortar	5. Concrete	6. Stone
7. Iron	8. Lead	9. Copper
10. Zinc	11. Aluminium	12. Steel
13. Glass	14. Timber	15. Slate
16. Roof tiles	17. Asphalt	18. Concrete
19. Brick	20. Stone	21. Mortar
22. Plaster	23. Cement	24. Sand
25. Lime	26. Gypsum	27. Clay
28. Lime	29. Gypsum	30. Clay
31. Lime	32. Gypsum	33. Clay
34. Lime	35. Gypsum	36. Clay
37. Lime	38. Gypsum	39. Clay
40. Lime	41. Gypsum	42. Clay
43. Lime	44. Gypsum	45. Clay
46. Lime	47. Gypsum	48. Clay
49. Lime	50. Gypsum	51. Clay
52. Lime	53. Gypsum	54. Clay
55. Lime	56. Gypsum	57. Clay
58. Lime	59. Gypsum	60. Clay
61. Lime	62. Gypsum	63. Clay
64. Lime	65. Gypsum	66. Clay
67. Lime	68. Gypsum	69. Clay
70. Lime	71. Gypsum	72. Clay
73. Lime	74. Gypsum	75. Clay
76. Lime	77. Gypsum	78. Clay
79. Lime	80. Gypsum	81. Clay
82. Lime	83. Gypsum	84. Clay
85. Lime	86. Gypsum	87. Clay
88. Lime	89. Gypsum	90. Clay
91. Lime	92. Gypsum	93. Clay
94. Lime	95. Gypsum	96. Clay
97. Lime	98. Gypsum	99. Clay
100. Lime	101. Gypsum	102. Clay

Stowe Garden, Temple of Friendship
RECTIFIED PHOTOGRAPHY ELEVATIONS 13, 14, 15, 16

CLAUDIO COSTANTINI
ARCHITECT
100, Via S. Andrea
00187 Roma, Italy
Tel: +39 06 4781 1111
Fax: +39 06 4781 1112
www.claudio-costantini.com

National Trust

Drawing no. 15-08 RECT-EL-05
Issue date NOVEMBER 2015
Issue status
Scale 1:50@ A1

Case Study 3 – Temple of Friendship



Case Study 3 – Temple of Friendship



Works to consolidate and conserve masonry and stucco was completed in such a way as to allow for the habitat status. As a standing ruin, the site was frequently inhabited by roosting bats.



Case Study 3 – Temple of Friendship



Restoring Stowe

Temple of Venus – Restored 1990's



Restoring Stowe

Temple of Concord & Victory – Restored 1990's



Restoring Stowe

The Gothic Umbrello– Restored 1990's



Restoring Stowe

The Corinthian Arch— Restored 2005



Restoring Stowe

The Corinthian Arch— Restored 2005



Restoring Stowe

The Corinthian Arch— Restored 2005



Restoring Stowe

The Grotto— Restored 2004



Restoring Stowe

The Wooden Bridge— Rebuilt 2009



Restoring Stowe

The Wooden Bridge— Rebuilt 2009



BRIDGE, ISLAND, AND PAVILION, STOWE

Restoring Stowe

View through the Doric Arch

Plate 34



View through the Doric Arch Cat. No. 79

Restoring Stowe

View through the Doric Arch



Restoring Stowe

The New Inn Visitor Facilities— Restored 2012



Restoring Stowe

The New Inn Visitor Facilities— Restored 2012



Restoring Stowe

The New Inn Visitor Facilities— Restored 2012

*Our Inn was a scurvy one and had not beds
for all*

*Those of us who went to bed could not
sleep*

for fleas and gnats ~ Viscount Percival 1724



Restoring Stowe

The New Inn Visitor Facilities— Restored 2012



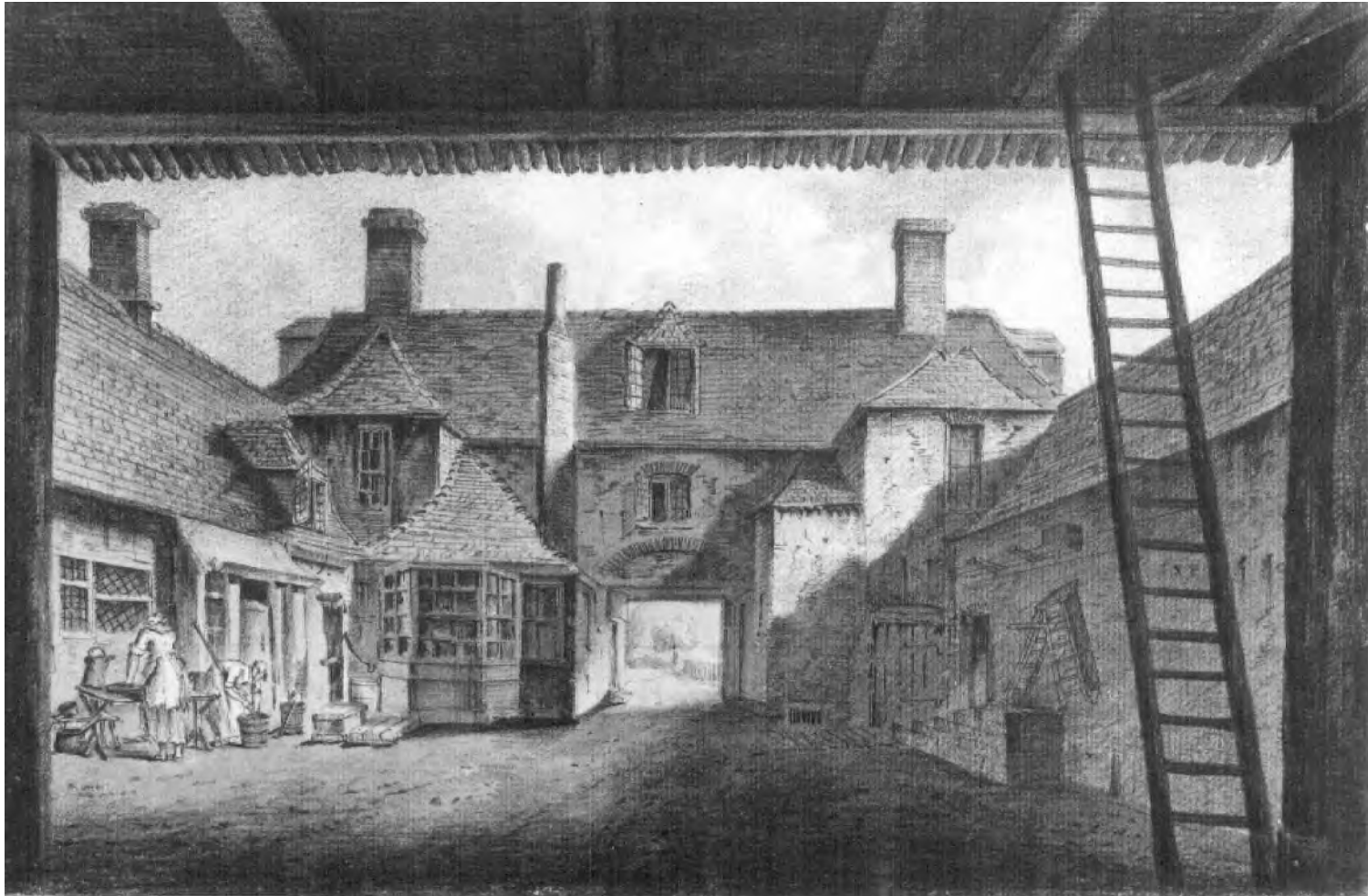
Restoring Stowe

The New Inn Visitor Facilities— Restored 2012



Restoring Stowe

The New Inn Visitor Facilities— Restored 2012



Restoring Stowe

The New Inn Visitor Facilities– Restored 2012

- Sensitive Conservation of Existing Farm Buildings
 - Visitor display areas
 - Staff/administration offices
- Sympathetic New Build Facilities
 - Restaurant
 - Shop
 - Toilets
 - Community/Function space

Car Parking and Entrance route to
Gardens

Restoring Stowe

The New Inn Visitor Facilities— Restored 2012

- Biomass Heating system (Wood chip from estate)
- Rainwater Harvesting (Existing tank)
- Waterless Urinals
- Passive Ventilation (No air con.)
- Sensitivity to Wildlife Habitats
 - Badgers
 - Birdlife

Sensitive site design to blend with landscape and control of light pollution.

Restoring Stowe

The Landscape Programme

2014 - 2019 – Landscape Programme
£2.5m

- 5 Year programme
- 54 Projects or separate tasks
 - 15 Statuary (Curatorial)
 - 17 Landscape (Head Gardener)
 - 22 Buildings/structures (Building Surveyor)



Restoring Stowe

The Landscape Programme



Restoring Stowe

The Landscape Programme



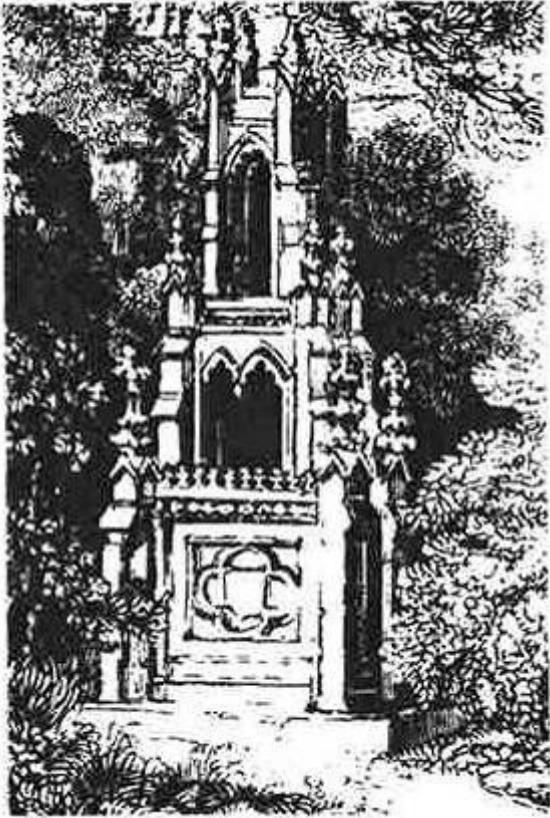
Restoring Stowe

The Landscape Programme



Restoring Stowe

The Landscape Programme



The Gothic Cross



Restoring Stowe

The Landscape Programme











Thank You !